

Key Features

Recorded

- Intuitive access to recorded video from any camera in system regardless of location
- Frame-by-Frame or variable playback speeds up to 16X
- View single camera or drag and drop up to 16 cameras for Synchronized Playback
- View groups of cameras via drag and drop
- Slider bar provides quick access to events
- Digital zoom on all recorded video
- Save JPEG or print snapshots
- Synchronized video and audio
- Instant replay of last 30 seconds of recorded video
- Create a clip with use of guides marking time interval
- Save clip to local client or server
- Continuous, motion activated, scheduled, event or trigger based recording
- Record up to 30 FPS or as little as 1 image per second, hour or day
- Record always at 1 FPS and higher frame rate on motion or alarm
- Pre- and Post-motion recording
- Support for camera and server side motion detection
- Create sensitivity zones in Windows client or camera configuration
- Motion Event logs provide quick review of video associated with motion or alarm events
- View recorded video from archived servers
- Graphical timeline highlights motion events
- Smart Search
- Progressive download speeds for slow-speed connection
- Automatically manages files and disk space
- Specify maximum retention by camera
- Panoramic/360 De-warped support
- View full aspect ratio of 16:9 or 4:3

Video Export

- Save JPEG or print snapshots
- Clips include visible watermark, server based date/time stamp and camera name
- Option to include MD5 checksum watermark in each clip
- Standalone Player to validate
- Recorded video is saved in camera's native or MJPEG compression in AVI file
- Exported clips include audio
- Synchronized video export of up to 9 video streams in single AVI file
- Standalone Player with Watermark Validation – Review recorded video on any PC while viewing thumbnails and using a scroll bar for precise investigation - includes option to validate a watermark

Live Video

- Full-featured Windows, Web, and Mobile Clients
- iPhone and iPad app available for free on iTunes
- Android app available for free through Google Play
- Mobile App supports live and recorded video from any camera, control of PTZs, and email images
- Web Client supports IE, Safari, Firefox, Opera and Chrome-Active X is optional
- Macintosh support via Web Client
- Support for other smartphone devices including BlackBerry and Windows Phones
- Client applications require little or no end user training
- View live video from any camera across multiple servers
- Quickly navigate between cameras from any server using

- standard Windows Explorer tree structure
- Unlimited users can view live video
- Digital Zoom on any image with mouse click
- Picture-in-Picture of zoomed area
- Create customized layouts and layout groups
- Drag cameras from left navigation tree into layout
- Predefined layouts stored in the database can pull cameras from multiple servers, restricted by security level
- Camera touring or Layout sequencing
- View full aspect ratio of 16:9 or 4:3
- 180° stitched layouts
- Single, Quad and Panorama views for 360° cameras
- Three PTZ control options including on-screen overlay commands, left navigation control and pop-up menu options
- Cycle PTZ presets, pausing for specified interval
- PTZ control with USB Joysticks
- Option to lock down non-admin users from PTZ controls
- PTZ Prioritization – Users can be ranked to determine who has PTZ operations at a specific time
- Search box allows quick access to any camera or server - search by partial name or IP address
- Save JPEG or print snapshots
- Push live video pop-up windows to other logged in users
- 2Way audio allows operators to interact with video
- Create Covert cameras by removing from navigation
- Pause individual camera for instant investigation
- High Performance option renders video in real time
- Run in Full Screen mode with limited menus
- Connect up to four monitors per PC
- Video Wall app supports up to 64 monitors
- Operators can push video to a Video Wall, cycle layouts or view alarms
- Motion alerts displayed for each camera
- Option to play sound on motion alarm
- Launch clients in full screen mode to predefined layouts
- Panoramic/360° De-warped support
- Public View App displays live images directly from camera without connecting to a server
- Lane Viewer App displays live images along with card holder picture and information to verify identity

Facility Maps

- Multi-level mapping provides quick access to cameras
- Mouse over Camera icons for live video pop-up
- Zoom into maps or navigate between multiple layers
- Quick access to recorded video from facility maps
- Launch specified facility map on startup
- View maps from Windows or Web Clients
- Mouse over Layout icons to switch live displays to groups of cameras in the area
- Easy setup requires JPEG, BMP or GIF images and drag and drop camera placement of maps, cameras, layouts or doors

Notifications & Automation

- Pop-up live windows of alarmed cameras
- Red outline in camera layout on alarm conditions
- Play audio file on alarm to alert operator
- Pop-up window with detailed instructions for operator
- Alarm actions include changing displays, execute DIO commands, display instant replay, push image to video wall, cycle spot monitor, move PTZ to presets, change recording options and record with audio

- Email or send text message of JPEG or AVI clip
- Alerts can be directed to specific users or groups
- Powerful Rules Wizard allows easy configuration of an unlimited to take actions after an event
- Motion alerts displayed for each camera
- Option to play a sound on motion alarm
- Send JPEG snapshots on an interval or on motion
- Alter operators of camera side Analytic events
- Using Analytic Tripwire, count people entering and exiting facility to keep running total and alert if threshold exceeded

Enterprise Functionality

- Support for unlimited cameras and recording servers
- Distributed login to any server prevents single point of failure
- Support for both centralized and distributed architectures
- Use existing SQL Server infrastructures or included SQL Express
- Centralized Management – all camera configurations for all servers are done from one easy to use setup screen
- Authenticate users with a Video Insight users database or with integration of users and groups from Active Directory, LDAP or Novell eDirectory
- Assign individual camera permissions to users or groups
- All system and user settings are stored in SQL database
- Centralized storage of user layouts and centrally managed
- Automatic Failover
- Health Monitor – comprehensive monitoring and alerting of system status
- Audit Trail of all user logins and configuration changes stored in a SQL database
- Automatic upgrade of client applications
- Automatic system backup
- Complete system performance statistics including - Storage, Bandwidth, Resolution, Format and Frame Rate
- Users only see assigned cameras regardless of number of servers
- Export camera and server information in Excel format
- Camera Maintenance logging and tracking .Net-based
- Software Development Kit

Security

- Enterprise-wide user management
- Multi-level security including restriction of setup, management, live and recorded viewing, PTZ operation, access to layouts, facility maps, rules and clip creation
- Authenticate users with a Video Insight users database or with integration of users and groups from Active Directory, LDAP or Novell eDirectory
- Assign individual camera permissions to users or groups
- Comprehensive log of all changes to system
- Option to restrict users from logging in from multiple locations
- Limit users to a single login per username
- Option for inserting MD5 checksum into all recorded video files to detect any tampering
- Camera Support
- Deep integration for *2,500 camera models from 100+ manufacturers
- Universal camera driver provides support for almost all other cameras via ONVIF, RTSP or HTTP
- Advanced camera features from Axis, Panasonic, IQeye, Sony, Sentry 360, Scallop and Immervision
- Single, Quad and Panorama views for 360 cameras
- Resolutions up to 20 Megapixel
- MJPEG, MPEG4, H.264 Compressions
- Multicasting support
- Multistreaming
- Camera or server side motion detection
- Support sensitivity and privacy zones
- Camera auto discovery
- Centralized camera management
- Audio inputs and outputs
- Combine audio and video from two independent sources
- Send live video to Axis Decoders
- Trigger Digital Inputs and Outputs
- Technology

- Pure 64-bit Server and Client
- Takes advantage of all available memory
- Optimized for centralization
- Robust scalable design
- Developed in open technologies including Microsoft .Net and SQL Server
- Virtualization support for VMware, Hyper-V and Xen Server
- Automated failover support
- Access live and recorded video or control the server with .NET SDK
- Easy integration with 3rd party application via the well defined SQL tables
- Server Software runs as a Windows Service
- Clients can connect to a single IP address to access the entire system
- Servers are connected to cameras and clients are connected to the servers - Clients do not connect directly to cameras
- Email support for SSL and alternate ports, supporting Gmail and Hotmail
- SSL certificates for secure web client transmissions
- Execute programs or batch files on triggered event

Storage

- Flexible high-speed storage design with no limits
- Support for internal and external storage devices including NAS, SAN and iSCSI
- Support for Pivot3 Cloudbank failover architecture and Dell EqualLogic iSCSI
- Integrator support for Veracity Coldstore
- Intransa Virtual and iSCSI solutions
- Long Term Storage for recorded video file management
- Move recorded video from single or multiple cameras or servers on a schedule basis
- Option to restrict users from logging in from multiple locations

Performance

- 250 two megapixel cameras per operating system
- Deep camera integration technology and storage architecture allow extreme server performance
- Total camera bandwidth of 600 Mbits/sec
- Unrestricted number of clients
- Load balancing
- High Performance live display mode can show up to 36 megapixel images at 30 FPS

Licensing

- Simple per camera licensing available in single camera increments
- No base or server fees
- Individual camera MAC address registration is not required
- No extra licensing costs for client applications
- Virtual cameras require only a single license
- Multi-stream connections only require one license
- Arecont 180° and 360° cameras require only a single license

Support Options

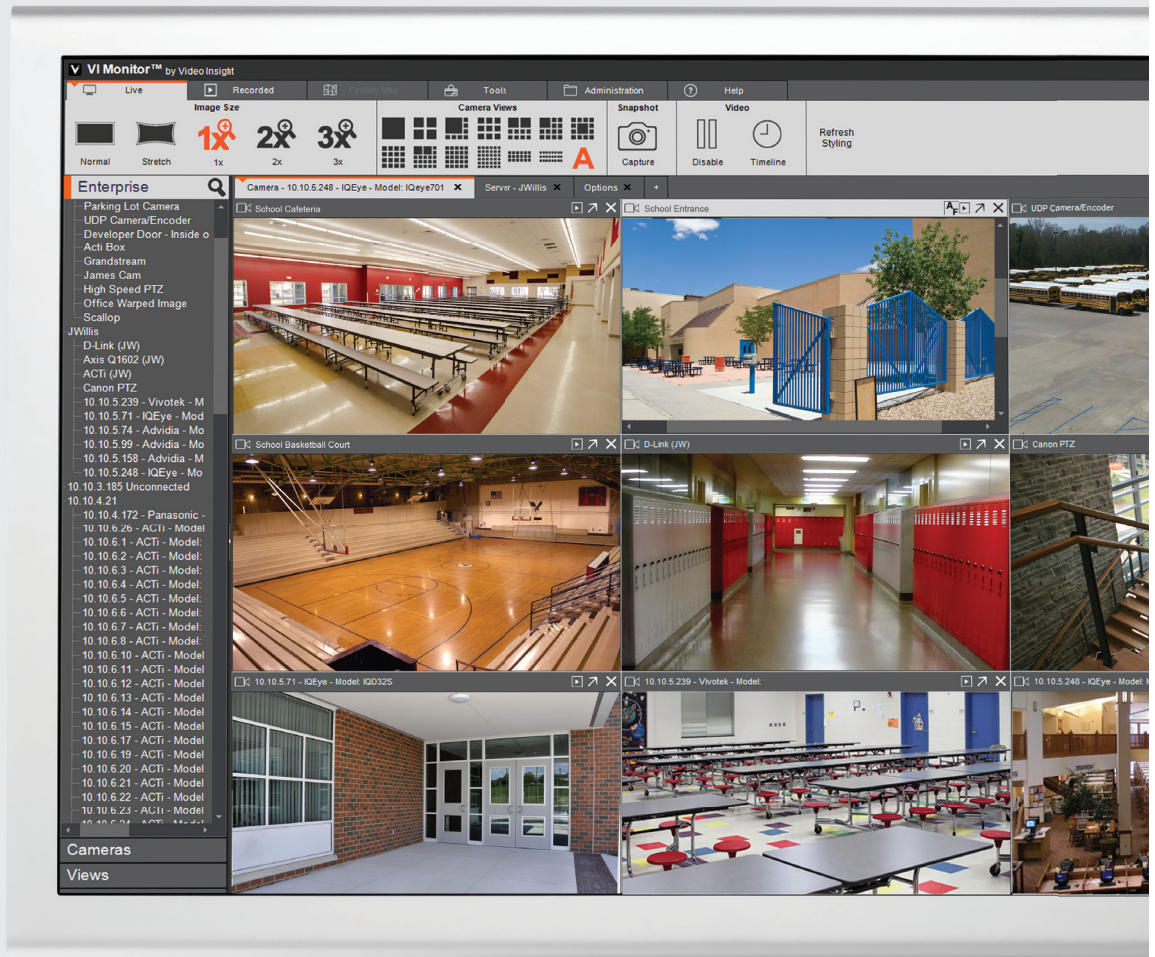
- Lifetime technical support Monday through Saturday
- Unlimited software updates
- Remote control applications for unattended access

Access Control Integration

- Lenel
- S2
- RS2
- Paxton
- HID
- IMRON
- DSX
- Blackboard
- AMAG

*Complete list available at www.video-insight.com

Enterprise VMS for Integrators



VIDEOINSIGHT
Campus Security Simplified

Trusted by
over 25,000
customers
worldwide

Today, many IP Video Management Software products have been designed with unnecessary complexity and a bloated infrastructure – and cost way too much to own! Video Insight brings an affordable, easy-to-use Video Management System that delivers full situational awareness and indisputable detail, reducing investigation time and allowing you to provide superior overall protection.

This powerful VMS solution captures, manages, and stores video surveillance across a network – on a single or multiple locations – and supports the broadest range of IP and analog camera models. Video Insight is the perfect solution for multi-facility configurations including K-12 schools, universities, hospitals, healthcare providers, law enforcement, and SMBs in need of a powerful yet easy-to-use software.

Grow and scale your system without limitations

Video Insight is an intuitive and robust video management software like no other. Our powerful VMS supports an unlimited number of client workstations, users, simple integration with legacy systems, detailed management system, and more. Add one – or hundreds – of cameras anywhere on the network or across the entire organization, regardless of geographic boundaries.

Become an Integrator and Increase Opportunities and Revenue

Dealers and Integrators play a vital role to the overall success of Video Insight's rapid-growth and increased market share. This is why we go to great lengths to select the right group of highly-qualified Systems Integrators to represent, sell, install, educate and support end user customers with Video Insight solutions.

Integrators and Dealers receive aggressive volume discounts, special offers and promotions, training, marketing assistance, shared leads, and world-class support. Your success is our success.

Lower entry to video surveillance market

Affordability, flexibility and a simple licensing model are what sets Video Insight apart from the rest – we provide the most cost-effective VMS solution on the market and are the easiest to work with.

Video Insight v6 allows end users to receive a perpetual license that includes a wide range of enterprise features – all included without any hidden fees.

Ensure your customer is always UP and Protected

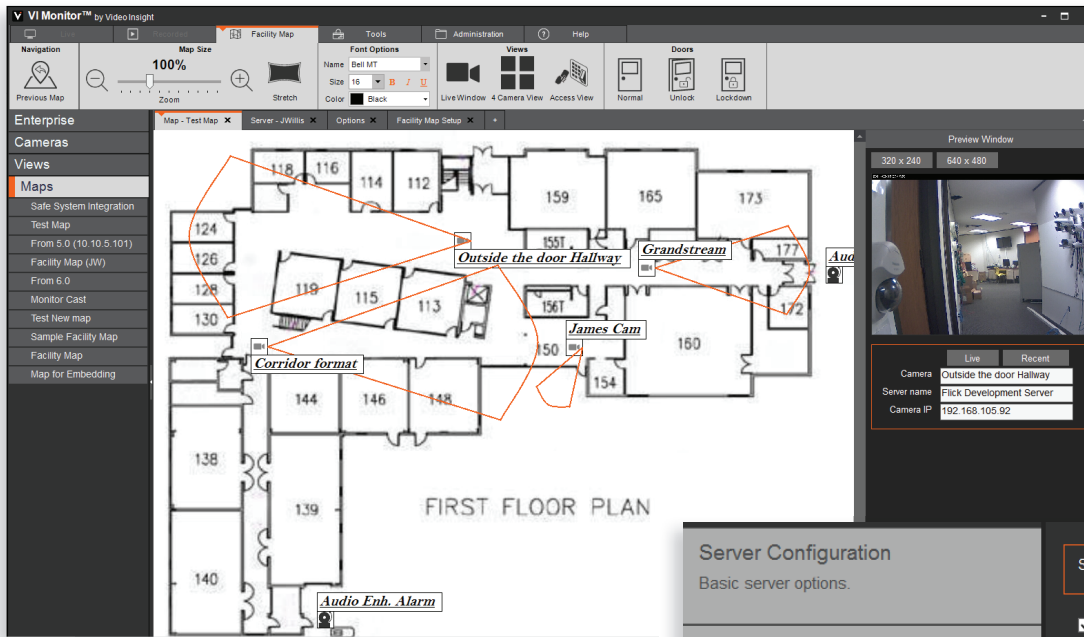
Maximize protection with redundant recording to multiple Network Video Recorders (NVRs). Health Monitor, Automated failover and easy to use load balancing allows migration of cameras between servers. All of these features can provide high system availability for both live and recorded video at all times. User-access privileges and security features ensure that your video, data, and audio aren't tampered with and are always protected.

Peace of mind with our Customer Assurance Program (CAP)

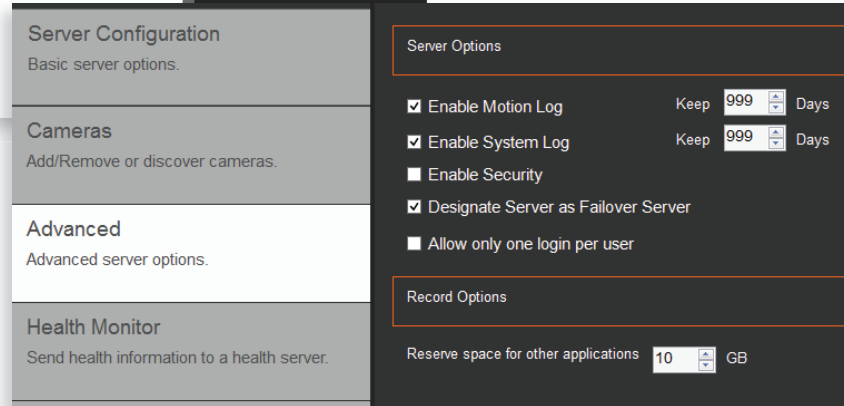
What good is your customer's current surveillance system if cameras are down and they don't know it? Our Customer Assurance Program (CAP) provides proactive monitoring and diagnostics to ensure you – and your customers – are never in the dark. Get notified upon failure and receive the assistance needed to solve the problem – this even includes replacement of cameras that were purchased from Video Insight.

Fanatical support

VI Fanatical Support starts with products and services. At Video Insight, we pride ourselves on being able to assist you in your time of need in a timely manner. We guarantee a callback within an hour or we'll give you \$100 credit towards your next order. The Video Insight U.S.-based technical support team will be there when you need them. Guaranteed.



Facility Maps



Simple Camera and Server Configuration

Key Product Features

Simple Camera and Server Installation

Video Insight simplifies complex network configurations and setup by automatically identifying cameras on the network – eliminating the need for manual configuration or searching.

Motion Detection

Detects and determines the presence of motion in a video tile. Configure and specify the level of motion required to trigger an event or archiving.

Remote Viewing

Powerful video surveillance features – even when you're on the go. View full resolution live and recorded images from any server on Apple and Android devices with VI Mobile. Email full resolution snapshots, view predefined camera layouts and import all servers and cameras.

Facility Maps

Allows you to upload any type of image of your buildings and then place camera icons on the map representing camera placement. Hover over the icon to see a live image. This feature supports multiple layers of maps that can link to one another, creating a graphical hierarchy.

Alert Monitoring

Rules Manager provides a step-by-step wizard to monitor for scheduled events that trigger one or multiple actions. These can be simple snapshot emails on motion during specific time frames or complex multi-step trigger and action (Such as calling campus security).

Centralized Deployments

Video Insight supports distributed or centralized deployments. When using a centralized server, multiple locations can share a server, maximizing the hardware and reducing the upfront cost and maintenance over time.

Active Directory Integration

Assign camera permission to Active Directory users and groups ensuring proper access rights and single sign-on capabilities. As users come and go, the video system administrators do not have to worry about updates because they are automatically inherited from the AD.

Low Bandwidth Options

Save bandwidth with dual stream configurations that allow users to view groups of cameras in low resolution and switch to high resolution in full screen. Allows users in remote locations to view live and recorded video feed without significant impact to the network.

Flexible Storage Options

Video Insight v5.5 supports all types of storage including local, direct attached, NAS and SAN. This provides the flexibility to store recorded video to a single location or to any number of devices simultaneously. This flexibility allows users to keep some recordings for a longer period of time.

Software Development Kit (SDK)

Provides the ability for third-party software developers to embed live and recorded into their applications or create triggers for the Video Insight Server.

Additional Features and Technical Specifications

User interface

- Intuitive and powerful
- Requires little or no end user training
- Quick search tool for cameras

Live and Recorded Monitoring

- Intuitive access to live and recorded video from any camera in system regardless of location
- Unlimited users
- Create customized layouts and layout groups
- Digital Zoom on any image
- PTZ control options including on screen overlay commands, left navigation control and pop-up menu options
- Picture in Picture of zoomed area
- 180 Degree stitched layouts
- PTZ control with USB Joysticks
- Panoramic/360 dewarped support
- Synchronized Playback

Alert Management

- Pop-up live windows of alarmed cameras
- Red outline in camera layout on alarm conditions
- Alerts can be directed to specific users or groups
- Email or send text message of JPEG or AVI clip
- Pop-up window with detailed instructions for operator
- Alarm actions include changing displays, executing DIO commands displaying instant replay, pushing image to video wall, cycle spot monitor, move PTZ to presets, change recording options and record with audio
- Using Analytic Tripwire, count people entering and exiting facility to keep running total and alert if threshold exceeded

Camera Support

- Deep integration for over 2,400 camera models from 100 manufacturers. Check our website for the complete list
- Universal camera driver provides support for most other cameras via ONVIF, RTSP or HTTP
- Advanced camera features from Axis, Panasonic, IQeye, Sony, Sentry 360, Scallop and ImmerVision
- Resolutions up to 20 Megapixels
- MJPEG, MPEG4, H.264 Compressions
- Multistreaming
- Camera or server side motion detection
- Support for sensitivity and privacy zones
- Camera auto discovery
- Centralized camera management
- Audio inputs and outputs
- Combine audio and video from two independent sources
- Send live video to Axis Decoders
- Trigger Digital Inputs and Outputs
- Support for Axis DIO and Audio device

Licensing

- Licensing in single camera increments
- No base or server fees
- No individual camera MAC address registration
- No extra licensing costs for client applications
- Virtual cameras require only a single license
- Multi-stream connections only require one license
- Arecont 180° and 360° cameras require only a single license

Technology

- Robust scalable Pure 64-bit design
- Developed in open technologies
- Automated failover support
- Load Balancing
- Easy integration with 3rd party application
- Server software runs as a Windows Service
- Clients can connect to a single IP address to access the entire system
- Servers are connected to cameras and clients are connected to the servers. Clients do not connect directly to cameras.
- Email support for SSL and alternate ports, supporting Gmail and Hotmail SSL certificates for secure web client transmissions
- Execute programs or batch files on triggered event

Storage

- Flexible high speed storage design with no limits
- Support for internal and external storage devices including NAS and SAN
- Support for COLDSTORE
- Long Term Storage for recorded video file management.
- Moves recorded video from a single or multiple cameras or servers on a schedule basis.

System Requirements

- OS Compatibility 32-and 64-bit versions of Windows XP, 7, 8, Server 2003, 2008R2, and 2012
- Virtualization support for VMware, Hyper-V and Xen
- Memory and CPU requirements are affected by number of cameras, resolution, FPS, and motion-based recording. Visit website for sample configurations.